

# Concerto D - Dur

*Deel 1: Allemande*  
*Deel 2: Ballo*  
*Deel 3: Giga*

Componist: Georg Philipp Telemann (14-03-1681 - 25-06-1767)

Arrangement: Willem Valenkamp 08 - 09 - 1992

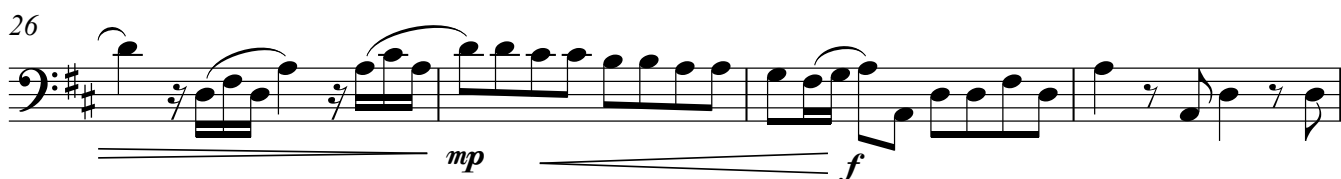
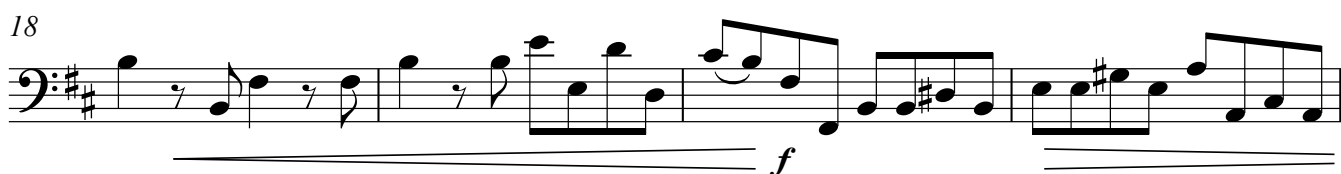


# Concerto D - Dur

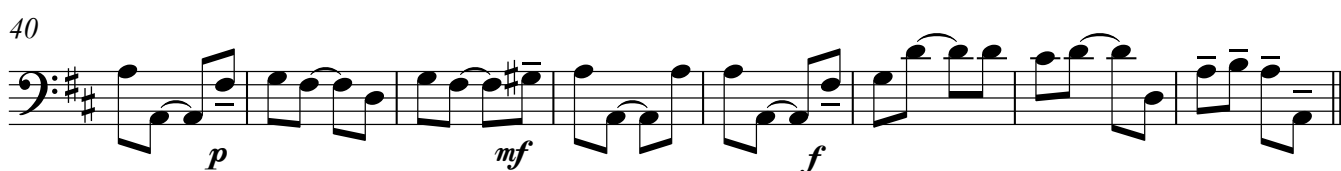
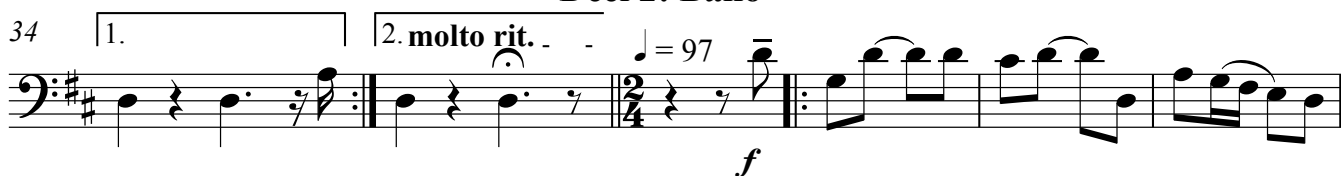
Componist: Georg Philipp Telemann

2  $\text{♩} = 68$   
Deel 1: Allemande

Synthesizer 1



## Deel 2: Ballo



## Synthesizer 1

48 1. 2.

*f* *f* *p* *mf* *f*

56

*p* *mf* *p* *mf* *f*

64

*p* *mf* *f*

70

*mf* *f*

## Deel 3: Giga

76 1. 2. molto rit..  $\text{♩} = 106$

*f* *f*

84

*mf* *f* *mf*

92

*mf*

100

*f* *mf* *p*

108 1. 2.

*f* *f*

116

*mf* *f* *p* *mp* V.S.

## Synthesizer 1

123



129



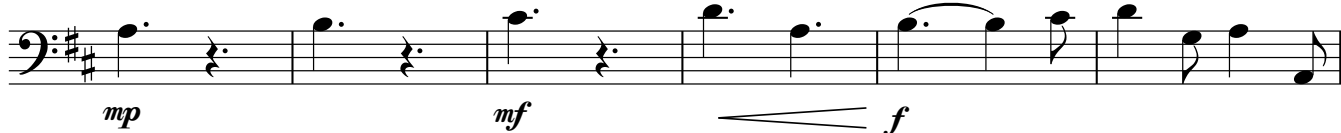
136



143



151



157



162

